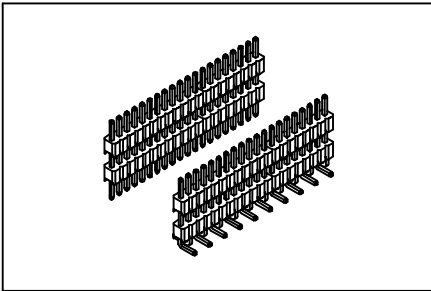


# Pin Header 1.27mm(0.050")

# GXCON



### Features:

- \* Choice of through-hole and surface mount.
- \* Custom designs offered.
- \* Double insulators offer wide versatility.
- \* Two foot print choices for Surface mount design.

### Material:

**Housing:** High temperature housing withstands IR and VPR soldering methods.

**Contacts:** Brass.

**Plating:** Gold plated over nickel.

Tin plated over nickel.

Selective gold plated: Gold plated on mating area and tin plated on solder tail.

### Electrical Characteristics:

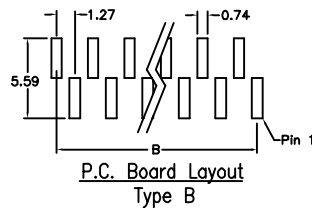
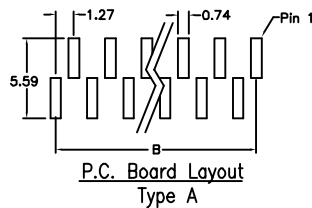
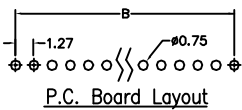
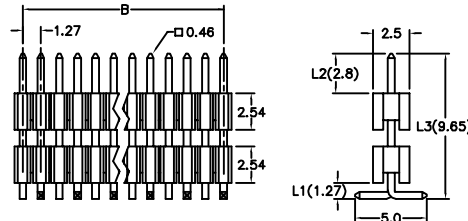
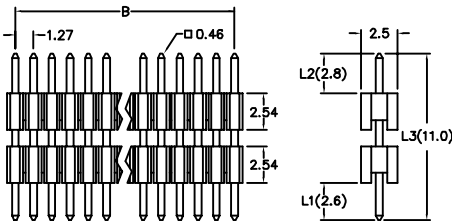
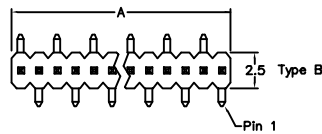
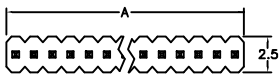
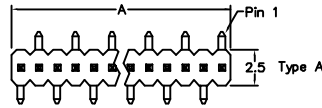
**Current Rating:** 1 AMP.

**Insulator Resistance:** 5000MΩmin. at DC 500V.

**Contact Resistance:** 20mΩmax. at DC 100mA.

**Operating Temperature:** -65°C~+125°C.

**Max Processing Temperature:** 230°C for 30~60 seconds.



Position	2 Thru 50
Dimension	
A	1.27 X No. of Positions
B	1.27 X No. of Positions -1.27

### Ordering information

PH24-	<u>1</u>	<u>50</u>	<u>1</u>	<u>1</u>	<u>A</u> /L1 /L2 /L3
Series	Single Row	No. of Pin Per Row	1: Gold Plated 2: Tin Plated 3: Selective Gold Plated	1: Straight 3: Surface Mount	*Foot Print Type A & B

Custom Design: Straight (i.e. PH24-15011/L1 /L2 /L3)  
Surface mount (i.e. PH24-15013A/L1/L2 /L3)